

UNIT, DIRECT SUPPORT, AND GENERAL SUPPORT MAINTENANCE
REPAIR PARTS AND SPECIAL TOOLS LIST
TRUCK, 5-TON, 6X6, M809 SERIES TRUCKS (DIESEL)

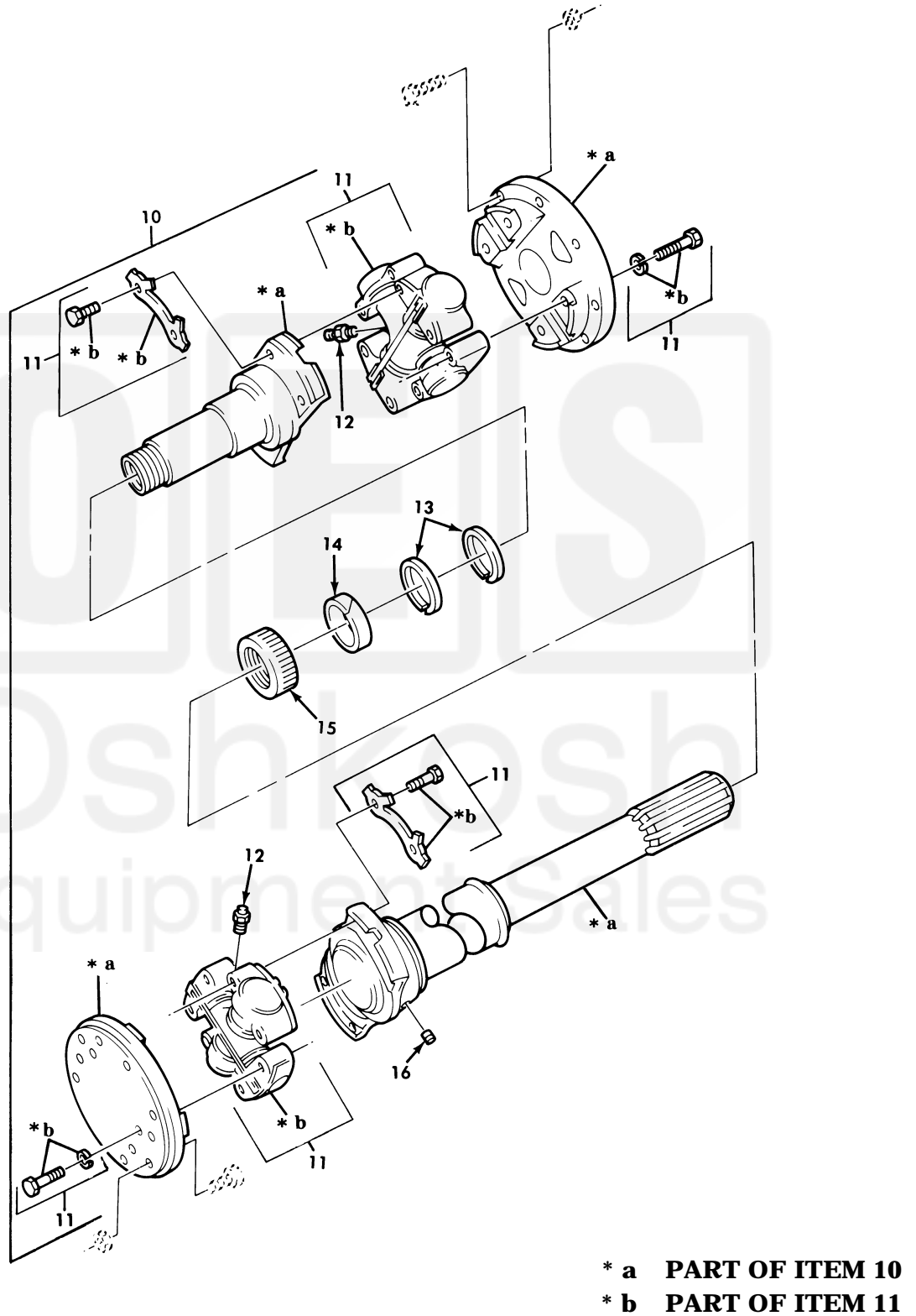


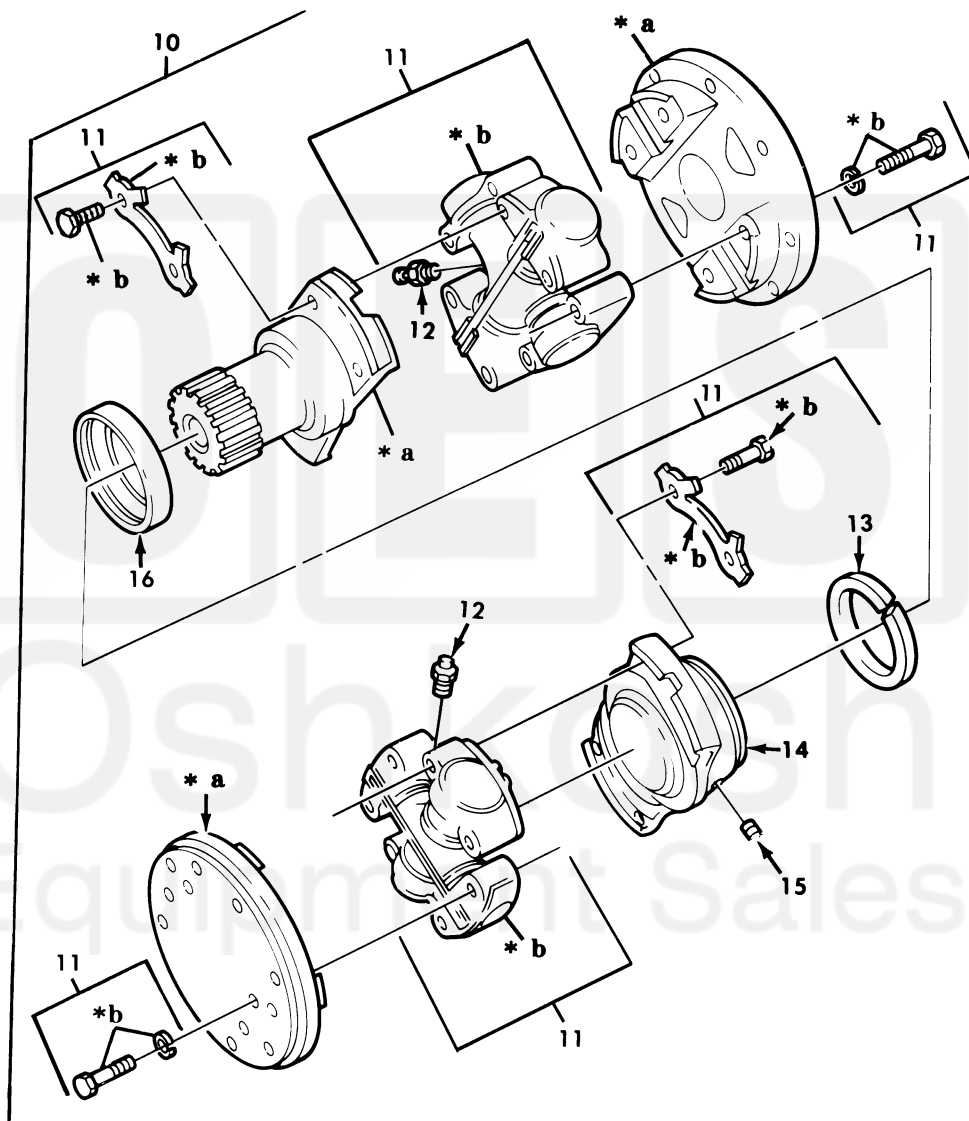
Figure 149. Propeller Shaft Assembly, Front Axle to Transfer Shaft, and Forward Rear Axle to Rear-Rear Axle (Mechanic's) (Sheet 2 of 2).

| (1) ITEM NO | (2) SMR CODE | (3) NSN | (4) CAGEC | (5) PART NUMBER | (6) DESCRIPTION AND USABLE ON CODE (UOC) | (7) QTY |
|--|--------------------|------------------|--------------|-----------------------|---|------------|
| GROUP 09 PROPELLER SHAFTS | | | | | | |
| 0900 PROPELLER SHAFTS | | | | | | |
| FIG. 149 PROPELLER SHAFT ASSEMBLY, FRONT AXLE TO TRANSFER SHAFT, AND FORWARD REAR AXLE TO REAR REAR AXLE | | | | | | |
| 1 | PAOOO | 2520-01-093-4274 | 19207 | 8332248 | PROPELLER SHAFT WIT FORWARD REAR AXLE TO REAR REAR AXLE..... | 1 |
| UOC: 614, 622, 623, 624, 625, 626, 627, 628, 629, 630, 631, 632, 633, 634, 635, 637, 638 | | | | | | |
| 1 | PAOOO | 2520-00-040-2340 | 95019 | 202729-3420 | PROPELLER SHAFT WIT FRONT AXLE TO TRANSFER TRANSMISSION..... | 1 |
| 1 | PAOOO | 2520-00-318-0983 | 72447 | 200825-3 | PROPELLER SHAFT WIT FORWARD REAR AXLE TO REAR REAR AXLE..... | 1 |
| UOC: 620, 621 | | | | | | |
| 2 | PAOZZ | 2520-00-388-4197 | 72447 | 5-279X | . SPIDER, UNIVERSAL JO..... | 2 |
| 3 | PAOZZ | 4730-00-050-4203 | 96906 | MS15001-1 | . FITTING, LUBRICATION..... | 1 |
| 4 | PAOZZ | 4730-00-050-4208 | 96906 | MS15003-1 | . FITTING, LUBRICATION..... | 1 |
| 5 | PAOZZ | 5310-00-276-3012 | 19207 | 7994440 | . WASHER, SPLIT..... | 2 |
| 6 | PAOZZ | 5330-00-298-5831 | 95019 | 5-16-23 | . PACKING, PREFORMED..... | 1 |
| 7 | PAOZZ | 2520-00-457-6660 | 19207 | 7349695 | . CAP, DUST, PROPELLER..... | 1 |
| 8 | PAOZZ | 5306-00-720-8747 | 96906 | MS20073-06-12 | BOLT, MACHINE..... | 16 |
| 9 | PAOZZ | 5310-00-982-4908 | 96906 | MS21045-6 | NUT, SELF-LOCKING, HE..... | 16 |
| 10 | PGOOO | 2520-00-901-9682 | 77873 | 2A-17550-1 | PROPELLER SHAFT WIT FRONT AXLE..... | 1 |
| 10 | PAOOO | 2520-00-901-9684 | 77873 | 4-78176 | PROPELLER SHAFT WIT FORWARD REAR AXLE TO REAR REAR AXLE..... | 1 |
| UOC: 621, 620 | | | | | | |
| 10 | PAOOO | 3010-00-901-9683 | 77873 | 2A-17550-2 | PROPELLER SHAFT WIT FORWARD REAR AXLE TO REAR REAR AXLE..... | 1 |
| UOC: 614, 622, 623, 624, 625, 626, 627, 628, 629, 630, 631, 632, 633, 634, 635, 637, 638 | | | | | | |
| 11 | PAOZZ | 2520-00-766-7607 | 79410 | 114-7205 | . PARTS KIT, UNIVERSAL..... | 2 |
| 12 | PAOZZ | 4730-00-050-4208 | 96906 | MS15003-1 | . FITTING, LUBRICATION..... | 1 |
| 13 | PAOZZ | 5310-00-734-8882 | 77873 | 8528J | . WASHER, SPLIT SLIPYOKE..... | 2 |
| 14 | PAOZZ | 5330-00-734-8881 | 77873 | 8529J | . FELT, MECHANICAL, PRE SLIPYOKE..... | 1 |
| 15 | PAOZZ | 2520-00-700-2402 | 77873 | 949J | . CAP, DUST, PROPELLER..... | 1 |
| 16 | PAOZZ | 4730-00-018-9566 | 81348 | WW-P-471ACABCA | . PLUG, PIPE..... | 1 |

END OF FIGURE

Equipment Sales

UNIT, DIRECT SUPPORT, AND GENERAL SUPPORT MAINTENANCE
REPAIR PARTS AND SPECIAL TOOLS LIST
TRUCK, 5-TON, 6X6, M809 SERIES TRUCKS (DIESEL)



* a PART OF ITEM 10

* b PART OF ITEM 11

Figure 150. Propellor Shaft Assembly, Transmission to Transfer Shaft (Mechanic's) (Sheet 2 of 2)

| (1) ITEM NO | (2) SMR CODE | (3) NSN | (4) CAGEC | (5) PART NUMBER | (6) DESCRIPTION AND USABLE ON CODE (UOC) | (7) QTY |
|--|--------------------|------------------|--------------|-----------------------|---|------------|
| GROUP 0900 PROPELLER SHAFTS | | | | | | |
| FIG 151 PROPELLER SHAFT ASSEMBLY, TRANSFER TO CENTER BEARING AND CENTER BEARING ASSEMBLY | | | | | | |
| 1 | PAOZZ | 5306-00-737-6152 | 78500 | 10X507 | BOLT,RIBBED NECK..... UOC:620,621,628,629,630,631,632 | 8 |
| 2 | PAOZZ | 5310-00-982-4908 | 96906 | MS21045-6 | NUT,SELF-LOCKING,HE..... UOC:620,621,628,629,630,631,632 | 8 |
| 3 | PAOOO | 2520-00-040-2343 | 72447 | 204586 | PROPELLER SHAFT WIT..... UOC:620,621,628,629,630,631,632 | 1 |
| 4 | PAOZZ | 2520-01-082-8619 | 78500 | CP280X | .PARTS KIT,UNIVERSAL..... UOC:620,621,628,629,630,631,632 | 1 |
| 5 | PAOZZ | 4730-00-050-4203 | 96906 | MS15001-1 | ..FITTING,LUBRICATION..... UOC:620,621,628,629,630,631,632 | 1 |
| 6 | PAOZZ | 5310-00-062-4954 | 96906 | MS21045-8 | NUT,SELF-LOCKING,HE..... UOC:620,621,628,629,630,631,632 | 4 |
| 7 | PAOZZ | 5305-00-719-5219 | 96906 | MS90727-111 | SCREW,CAP,HEXAGON H..... UOC:620,621,628,629,630,631,632 | 4 |
| 8 | PAOZZ | 2520-00-656-0323 | 19207 | 10871093 | CENTER BEARING DRIV..... UOC:620,621,628,629,630,631,632 | 1 |
| 9 | PAOZZ | 4730-00-050-4208 | 96906 | MS15003-1 | ..FITTING,LUBRICATION..... UOC:620,621,628,629,630,631,632 | 1 |
| 10 | PAOZZ | 2520-00-734-6802 | 78500 | 5WCS32-37A | FLANGE,COMPANION,VE..... UOC:620,621,628,629,630,631,632 | 1 |
| 11 | PAOZZ | 4910-01-313-4621 | 80201 | 99293 | REPAIR KIT,SLEEVE..... UOC:620,621,628,629,630,631,632 | 1 |
| 12 | PAOZZ | 5310-00-947-2962 | 19207 | 10871081 | NUT,PLAIN,SLOTTED,H..... UOC:620,621,628,629,630,631,632 | 1 |
| 13 | PAOZZ | 5315-00-298-1498 | 95097 | 70000-362 | PIN,COTTER..... UOC:620,621,628,629,630,631,632 | 1 |
| 14 | PAOOO | 2520-00-904-8107 | 77873 | 2S17551 | PROPELLER SHAFT WIT..... UOC:620,621,628,629,630,631,632 | 1 |
| 15 | PAOZZ | 2520-00-585-8598 | 77873 | 114-8205 | .SPIDER,UNIVERSAL JO..... UOC:620,621,628,629,630,631,632 | 1 |
| 16 | PAOZZ | 4730-00-172-0010 | 96906 | MS15002-1 | ..FITTING,LUBRICATION..... UOC:620,621,628,629,630,631,632 | 2 |

END OF FIGURE